



Piper Knowle View, Hardwick, Stockton-On-Tees, TS19 8GW

A MODERN THREE STOREY HOUSE providing SPACIOUS family accommodation which is well presented throughout and in 'ready to move in' condition.

Ground floor accommodation includes an entrance hall, WC, good sized kitchen/dining room and a spacious rear lounge with double French doors leading out to the low maintenance rear garden.

At first floor level there are two bedrooms, the family bathroom, with shower over the bath, and a study area. The top level provides a particularly impressive master suite, with large bedroom having fitted wardrobes and with an en-suite shower room.

There is a lawned front garden and an attractively paved rear garden. A garage and drive are also to be found at the rear.

Piper Knowle View is conveniently situated for University Hospital of North Tees, local facilities, the Tesco Extra superstore, schools and public transport.

£150,000



Piper Knowle View, Hardwick, Stockton-On-Tees, TS19 8GW

HALLWAY

LOUNGE

14'6" x 11'3" (4.42m x 3.43m)

KITCHEN/DINING ROOM

11'4" x 13'8" (3.45m x 4.17m)

DOWNSTAIRS WC

4'8" x 3'3" (1.42m x 0.99m)

LANDING

STUDY

6'4" x 6'3" (1.93m x 1.91m)

BEDROOM TWO

14'6" x 9'3" (4.42m x 2.82m)

BEDROOM THREE

9'11" x 7'11" (3.02m x 2.41m)

BATHROOM

7'11" x 5'5" (2.41m x 1.65m)

LANDING

BEDROOM ONE

16'11" x 14'6" (5.16m x 4.42m)

ENSUITE

7'8" x 5'10" (2.34m x 1.78m)

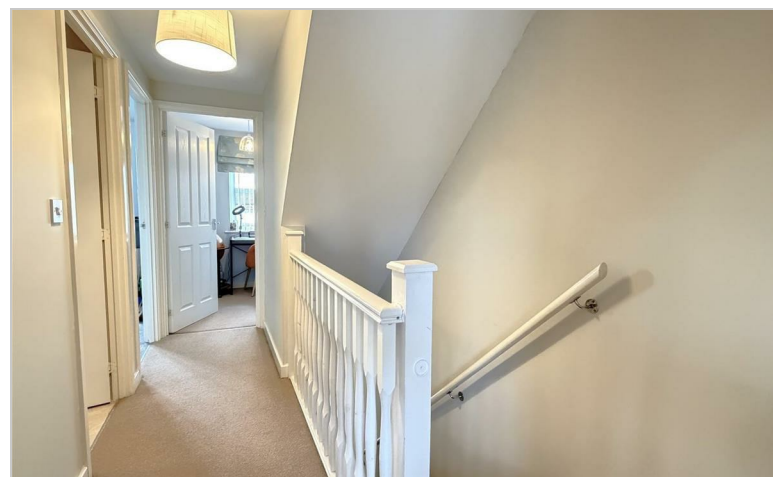
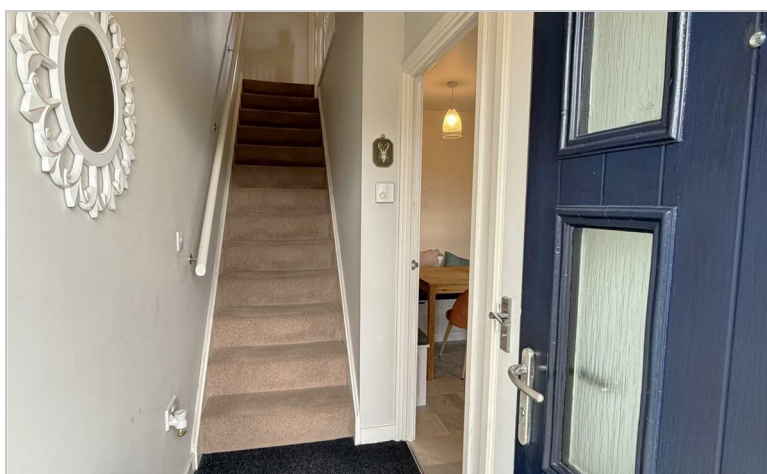
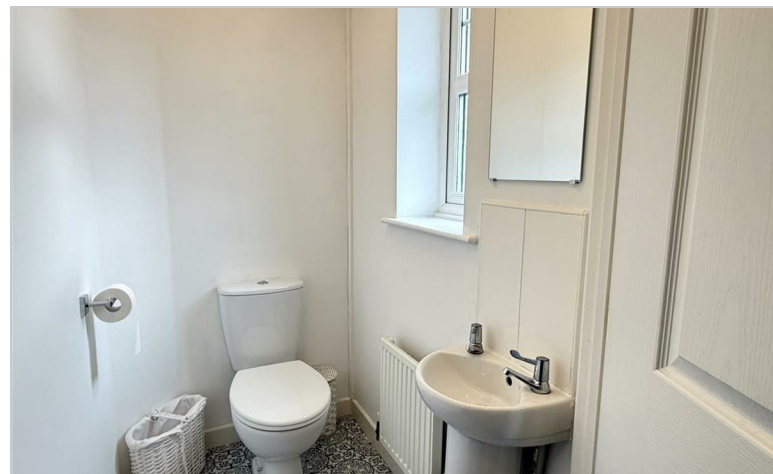
GARAGE

17' x 8'9" (5.18m x 2.67m)

AML PROCEDURE

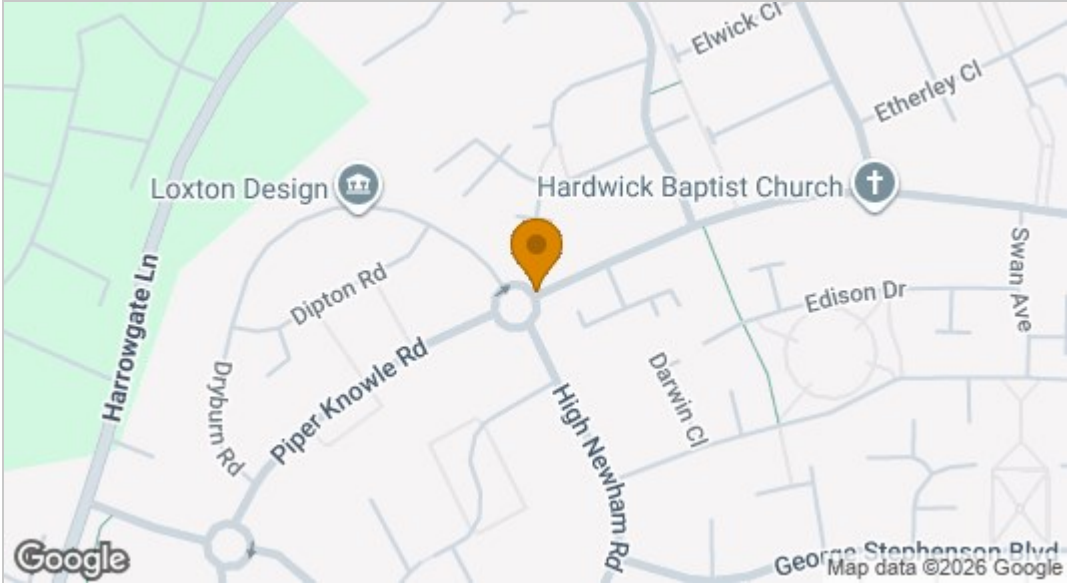
To comply with anti-money laundering regulations (AML) all estate agents must be registered with HMRC. Gowland White complies with this legislation by using an online AML risk assessment company, approved by the UK Government. Please note that all buyers are charged a fee of £36.00 (inc. VAT), for each buyer, to cover this process. These fees are payable before we can progress an agreed sale.



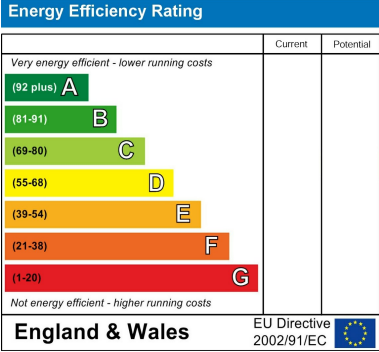




Map



EPC graph



Floor Plan



VIEWING

Please contact us on 01642 615657 if you wish to arrange a viewing or would like more information.

These particulars, whilst believed to be accurate are set out as a general outline only for guidance and do not constitute any part of an offer or contract. Intending purchasers should not rely on them as statements of representation of fact, but must satisfy themselves by inspection or otherwise as to their accuracy. No person in this firms employment has the authority to make or give any representation or warranty in respect of the property.